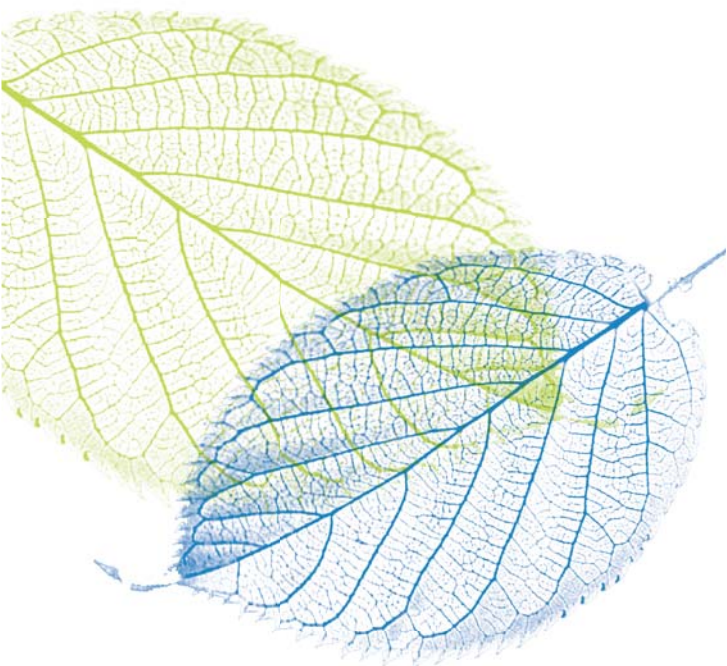





AGC and Cradle to Cradle:
a sustainable combination





AGC and C2C: a sustainable combination

“In attaining C2C certification, AGC is an inspiration to others and a leader in positively transforming the construction industry towards using products and materials that are safe and ecologically intelligent. We applaud AGC’s commitment to Cradle to Cradle and a future of abundance.”
– William McDonough, co-founder. ”

Do you dream, like us, of a world where all materials used in a product are put to use again in another product? And do you blissfully drift away into a world where all by-products are reused without any loss of quality and thereby benefit the environment and society? Waste becomes food and the cycle is complete. Well, now wake up from your dreams because that world is almost here: the 'Cradle to Cradle' (C2C) philosophy is rapidly gaining ground. And AGC is no exception, as we are the only European glass manufacturer whose products bear the C2C label. And there you have proof that dreams aren't an illusion.

C2C

In simple terms, Cradle to Cradle (C2C) is a concept in which waste and by-products act as raw materials for a new product. In other words, raw materials are continuously being used and reused. The concept is broader than recycling and focuses not on reducing consumption but on sustainable development. C2C is the brainchild of German chemist Michael Braungart and American architect William McDonough, proclaimed 'heroes of the planet' by Time magazine for their sustainable, innovative and influential view of the world. Together they developed a programme called McDonough Braungart Design Chemistry (MBDC), in which they challenge the business community, the authorities, academia, builders and designers to design products, buildings and houses more intelligently and in so doing make optimal use of production processes that make a positive contribution to their environment, e.g. energy generation and air purification.

C2C Certification Process

The C2C programme aims to evaluate the sustainable nature of products throughout their life cycle. Their sustainability is tested from the very first phase of production up to and including the moment when the product is discarded. Any by-products are also tested. Certification is issued once the quality of the products and their human and environmental impact have been evaluated. The greater the positive contribution to the environment, the higher the level of certification the product will receive. The trick is to develop products which fit into a cycle and can be continually reused and whose manufacturing process has a positive rather than harmful impact on their surroundings.

C2C in a nutshell

- Products and processes are designed in such a way that materials remain available to humans and their natural environment.
- Products are designed so that the materials can be completely reused in the biological or technical cycle.
- Products in the biological cycle must be fully biodegradable and be able to serve in nature as food for natural organisms.
- Products in the technical cycle must act as a high-quality raw material for new products in the technological domain.
- Absolutely no harmful waste substances may be released during the manufacturing process.
- Products are manufactured using sustainable energy sources.

Silver!

AGC Glass Europe has been awarded Cradle to Cradle Silver certification for its float glass and magnetron coatings, making it the only European glass manufacturer to have gone through the MBDC programme. To retain its Silver certification, AGC is obliged to continuously improve products and production processes, and annual evaluations are carried out to this end.

This challenge fits perfectly with AGC's way of working. For years now, AGC has been working on developing environmentally-conscious solutions, and we continue to make supreme efforts to ensure that our purchasing and recycling processes are environmentally sustainable.

During their service life our products have no adverse effect on the environment. They are made of raw materials that are widely available and fully recyclable. We incorporate between 25% and 31% recycled glass into our raw materials as standard. We process by-products left over after recycling – sometimes directly, sometimes after treatment, e.g. the removal of metals. From 2012 onwards, the level of residual waste in all our European companies will be less than 1%. Since 2006, water consumption has dropped 15%, while energy consumption has fallen by 10%. AGC has a Green Purchasing procedure and is working on many green energy projects, e.g. projects to generate green energy and utilise solar energy in production processes.

For AGC, its Cradle to Cradle Silver certification is the icing on the cake and an extra incentive to continue down the path of environmental consciousness.





“C2C dovetails perfectly with our corporate philosophy, a key pillar of which is environmental care. I am delighted that we are the first European glass producer to earn certification.” – Jean-François Heris, President & CEO of AGC Glass Europe. ”



Triple P

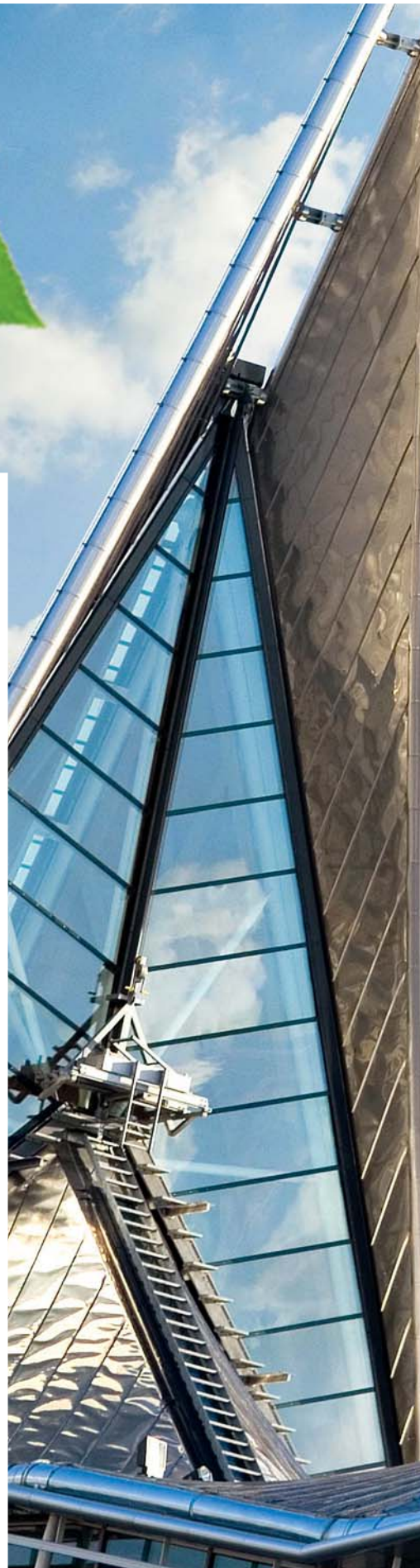
The C2C concept fits in well with AGC's Corporate Social Responsibility (CSR) policy. This policy refers to a business model which is profitable and responsible, both socially and environmentally: the so-called people-planet-profit approach. This is of paramount importance for AGC, since our company aims to not only be economically healthy but also to provide a safe and inspiring workplace for its staff, to be a good neighbour to local residents and businesses, to cause only minimal emissions of harmful substances, to eliminate toxic substances from its products, and to supply products that enable users to adopt a more sustainable approach in their activities. This represents a considerable challenge for AGC and its staff.

CSR in action

AGC's CSR policy can be seen not only in its words but in its deeds. One obvious example is our C2C certification – but there is more. In a bid to ensure that we retain our focus and continuously improve our performance, we had our environmental and safety management systems certified compliant with ISO 14001 and OHSAS 18001.

It is also worth noting that when we calculated AGC Glass Europe's carbon footprint by comparing the level of our company's CO₂ emissions with the volume of emissions saved by our products, we found that every tonne of CO₂ emitted was more than compensated by the seven to nine tonnes saved by using our products in buildings.

AGC has achieved good results, for example with regard to acidifying substances that are released when making glass: emissions have been halved in the past 12 years.





AGC Glass Europe

This clearly shows that C2C, Triple-P and CSR are taken seriously at AGC Glass Europe. If you want to find out more about our policy, performance and results in this field Then go to www.agc-glass.eu and check out our environmental report.

AGC Glass Europe creates, manufactures, processes and distributes flat glass for the construction industry (exterior glazing and interior decorative glass), the automotive industry, the solar industry and other specialist sectors. We are the European branch of AGC Glass, the world's largest flat glass manufacturer.

“70% of our Research & Development budget is spent on developing ‘green’ products and technologies.” – Marc Van Den Neste, Vice-President and Chief Technology Officer, AGC Glass Europe. ”

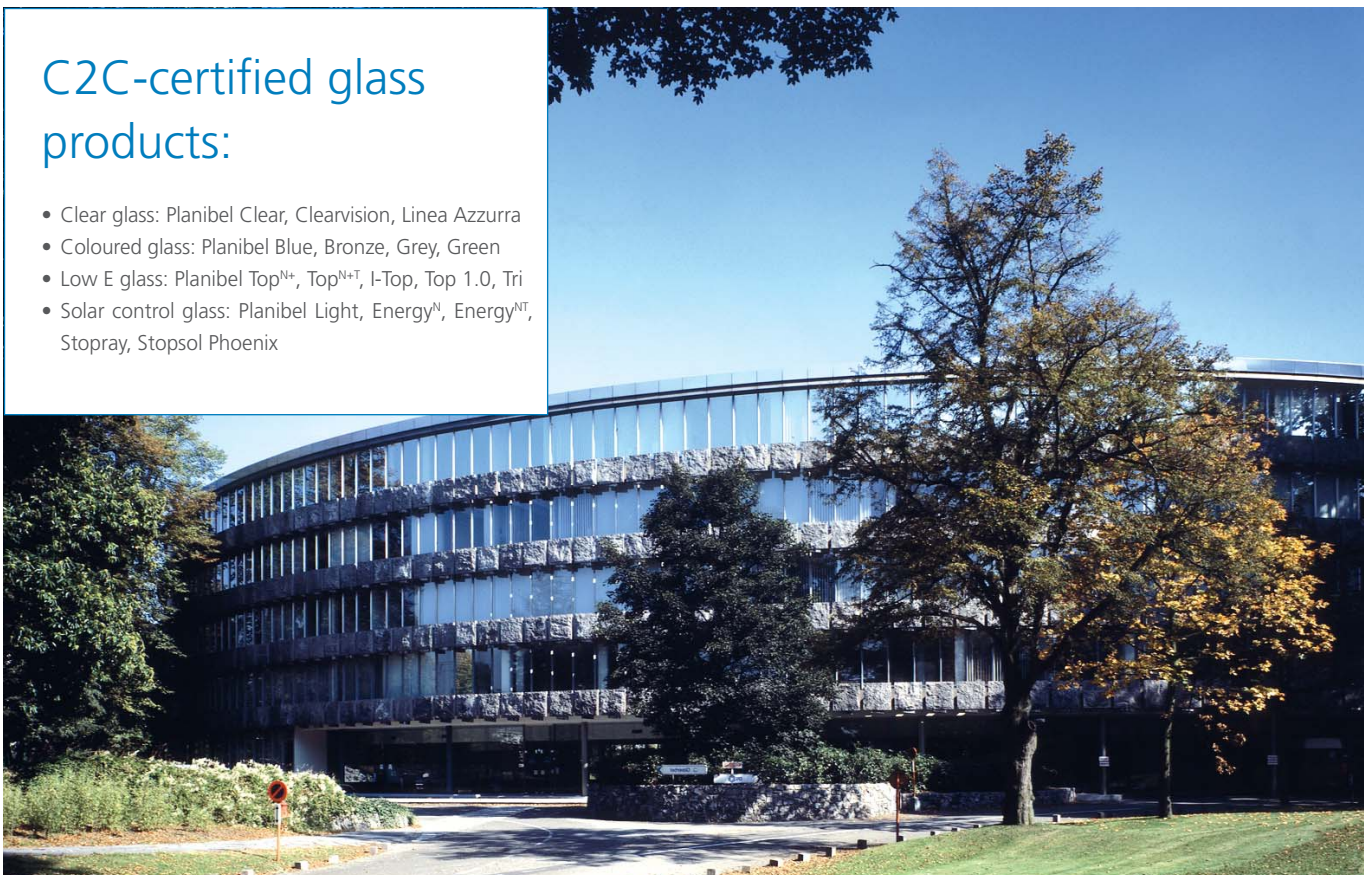
The baseline ‘Glass Unlimited’ reflects the boundless possibilities of:

- glass: a material that meets a growing number of requirements (comfort, energy management, health and safety, aesthetic appearance);
- innovative products and processes: made possible thanks to constant research in advanced glass technology;
- AGC's industrial facilities: more than 100 units for manufacturing, processing and distribution throughout Europe, from Spain to Russia;
- AGC's global sales network;
- our personnel, motivated by excellence and innovation.

AGC Glass Europe employs 13,000 people who are passionate about our planet. Are you?

C2C-certified glass products:

- Clear glass: Planibel Clear, Clearvision, Linea Azzurra
- Coloured glass: Planibel Blue, Bronze, Grey, Green
- Low E glass: Planibel Top^{N+}, Top^{N+T}, I-Top, Top 1.0, Tri
- Solar control glass: Planibel Light, Energy^N, Energy^{NT}, Stopray, Stopsol Phoenix





www.yourglass.com



UNITED KINGDOM – AGC Flat Glass UK – Tel.: +44 (0)1788 53 53 53 – Fax: +44 (0)1788 56 08 53 – sales.uk@eu.agc.com
OTHER COUNTRIES – AGC Glass Europe – Tel.: +32 (0)2 674 31 11 – Fax: +32 (0)2 672 44 62 – sales.headquarters@eu.agc.com

AGC Glass Europe has representatives around the world. You can find their details at www.yourglass.com.

