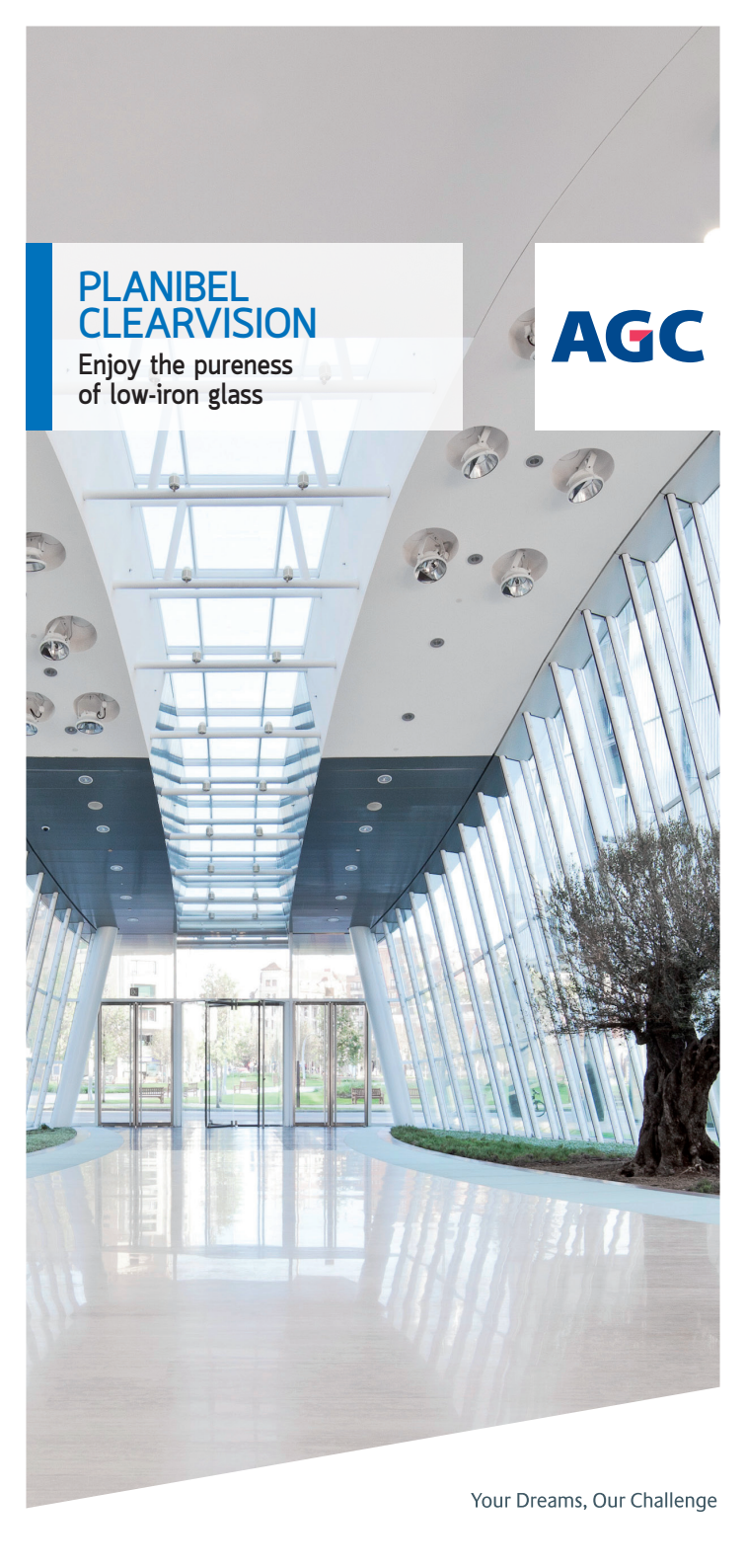
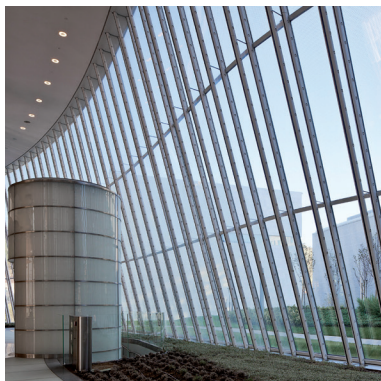


# PLANIBEL CLEARVISION

Enjoy the pureness  
of low-iron glass

The AGC logo is displayed in a bold, blue, sans-serif font. The letter 'G' is stylized with a red horizontal bar at its top right corner. The logo is positioned in the upper right quadrant of the image, set against a white rectangular background.The background of the advertisement is a photograph of a modern building's interior. The space is characterized by a high ceiling with a series of long, parallel skylights that allow natural light to filter through. The walls are composed of large, vertical glass panels that reflect the surrounding environment. The floor is highly polished and reflective, mirroring the ceiling and walls. A large, mature tree is visible on the right side of the frame, adding a natural element to the architectural design. The overall atmosphere is bright, clean, and spacious.

Your Dreams, Our Challenge



Everything you need to know is in the name. With unparalleled light transmission of 92% (4mm) and excellent colour rendering, Planibel Clearvision is the natural choice when crystal clear vision and clarity count.

It's no wonder this low-iron high quality glass is being used more and more by architects and designers for projects requiring a high degree of transparency.

Even when used in extra-thick versions for furniture or interior design (up to 19mm), it remains perfectly neutral, proof of just how pure this product is.

# Enjoy the pureness of low-iron glass

## PLANIBEL CLEARVISION

What's so special about it?

What does this mean for you?

- Unparalleled light transmission of 92% (4 mm)** – Increases amount of light entering a building, resulting in increased wellbeing of building occupants
  - Offers a bright view through the glass
- High colour rendering index** – Superior quality of light in a building
  - The colours of objects or nature seen through the glass appear bright and fresh
  - When backpainted for interior applications, Planibel Clearvision conveys true and pure colours
- Crystal clear aesthetics** – Delivers a superior edge finishing when used in interior design (e.g. tables, doors, balustrades, etc)
- Great level of energy transmission** – Benefit from higher level of solar gain
- Low level of energy absorption** – Optimised cost and timing of construction phase through reduced need for toughening glass in insulated and triple glazing units

### PLANIBEL CLEARVISION is Cradle to Cradle Certified™ Bronze



The Cradle to Cradle certification system is a globally recognised measure of safer and more sustainable products made for the circular economy. It evaluates a product's sustainability across its entire life cycle. To achieve certification, a product must meet strict standards in five categories linked to health and the environment: Material Health, Material Reutilisation, Renewable Energy, Water Stewardship and Social Fairness.

By committing to C2C standards, AGC can deliver high-quality products while protecting people and the environment, and while supporting its customers in their socially and environmentally responsible purchasing decisions.

# Technical specifications

## PLANIBEL CLEARVISION

| PLANIBEL CLEARVISION    | 3 mm | 4 mm | 5 mm | 6 mm | 8 mm | 10 mm | 12 mm | 15 mm | 19 mm |
|-------------------------|------|------|------|------|------|-------|-------|-------|-------|
| Light Transmission % LT | 92   | 92   | 92   | 92   | 91   | 91    | 91    | 91    | 90    |
| Solar Factor % g        | 91   | 91   | 91   | 91   | 90   | 90    | 89    | 88    | 88    |
| Colour Rendering Index  | 100  | 100  | 100  | 100  | 100  | 99    | 99    | 99    | 99    |
| Purity % <sup>1</sup>   | 0.1  | 0.1  | 0.1  | 0.1  | 0.1  | 0.1   | 0.2   | 0.2   | 0.2   |

<sup>1</sup> According to CIE 15: 2004

Note: The LT and g values in this table are calculated according to EN 410

## Processing options

|                            |                                     |
|----------------------------|-------------------------------------|
| Safety                     | Toughening or heat-strengthening    |
|                            | Laminating (PVB or EVA)             |
| Cutting                    | Straight or circular                |
| Shaping and edge finishing | Edge grinding                       |
|                            | Grinding                            |
|                            | Drilling                            |
|                            | Notches                             |
| Special treatments         | Sandblasting                        |
|                            | Etching                             |
|                            | Silk-screen printing and enamelling |
|                            | Painting and silvering              |
|                            | Bending                             |
| Insulated glazing units    | Double or triple glazing            |

PLANIBEL CLEARVISION is available:

- in a large range of thicknesses from 3 mm to 19 mm.  
For more details, refer to AGC's Product Catalogue on [www.agc-yourglass.com](http://www.agc-yourglass.com)
- in many formats, up to 18 meters.  
For more details, visit the OverSized Glass section on [www.agc-yourglass.com](http://www.agc-yourglass.com)



Discover more on **Planibel Clearvision**

### AGC GLASS EUROPE

UNITED KINGDOM: AGC Glass UK - T +44 1788 53 53 53 - [sales.uk@agc.com](mailto:sales.uk@agc.com)

OTHER COUNTRIES: AGC Glass Europe - T +32 2 409 30 00

[sales.headquarters@agc.com](mailto:sales.headquarters@agc.com)

AGC Glass Europe has representatives worldwide.

See [www.agc-yourglass.com](http://www.agc-yourglass.com) for further addresses.

